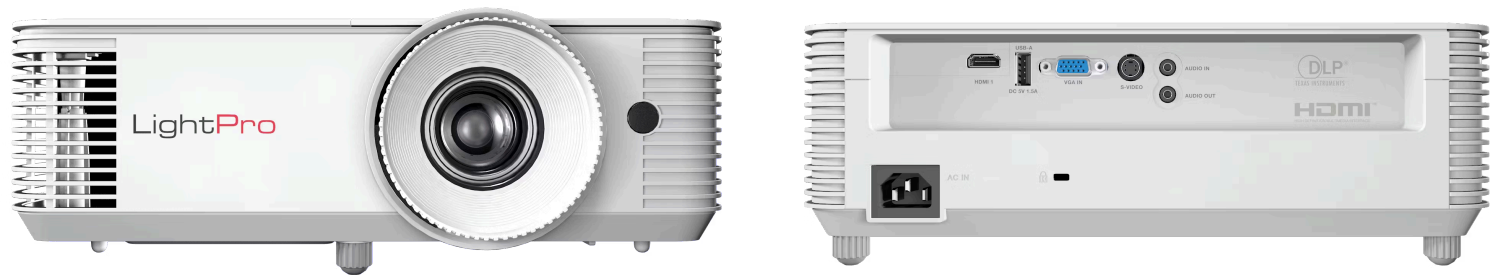


# IN0002SL



An outstanding price-performance all-rounder, the InFocus Genesis III Series combines ultra-long lamp life, high brightness, and superb connectivity in one compact package. They are designed for tight budgets, so you don't have to sacrifice image quality or performance.

The InFocus Genesis III Series truly offers the best of both worlds: affordability and excellent projection capabilities, making it the perfect choice for cost-conscious users who demand excellence.

## Features

### Industry-leading 15000 hours lamp lifespan

Our lamps are designed to last longer, ensuring extended durability and long-term performance. This exceptional longevity reduces the need for replacements, offering unparalleled reliability and cost savings over time.

### Bright, Vivid Images On Any Surface with 4000 lumens

Transform any room into a dynamic presentation space or vibrant cinema even in ambient environment. With 4000 lumens, image colours and details are crisp and clear. Presentations look more professional, and even simple video clips become more engaging.

### Low Latency for Smooth and Responsive Gaming

Make your gameplay more immersive and exhilarating with low latency projection. With minimize lag for real-time game execution delivery, you can enjoy a responsive and seamless gaming experience to the fullest .

### Eco-Friendly with Minimal Maintenance

With minimal maintenance and no filter to replace, this means less waste and reduced environmental impact contributing to sustainability and supports a greener future while providing reliable and consistent performance.

### Advanced Digital Image Correction

With the new digital edge masking and image shift features – we make getting those final image adjustments perfect easy.

## Direct Power On/ Direct Power off

No more waiting. The projector instantly powers up when it receives an electric current. When you are finished, simply switch off the power, no need for lengthy cooling period to shut it down.

## Low Total Cost of Ownership

Industry-leading 15000 hours of lamp life and filter-free design saves you time and money.

## Lightweight and Portable

Its compact and light form makes it portable giving you flexibility for different uses.

## USB-A Power for Devices

The integrated USB-A power source conveniently powers HDMI devices like Google Chromecast or a wireless dongle to enhance presentation performance.

## 24/7 Operation

The Genesis I Series is designed for 24/7 operations in standard orientation and is ideal for applications requiring extended projection periods.

## Outstanding 30000:1 Contrast Ratio

Indulge in a vivid, clear visual feast with enhanced image clarity and better details with deeper blacks and brighter whites.

## Full 3D Capability

The InFocus Genesis III Series is designed to display 3D content from almost any 3D source, including 3D Blu-ray players and the latest game consoles. Picture watching a movie at home or visualizing product concepts at the office - characters and products pop out and deliver a mesmerizing visual experience.

## Image

Projection Technology	Texas Instruments DLP®
Panel Size	0.55" DMD
Native Resolution	SVGA
Pixels	800 x 600
Aspect Ratio	4:3
Contrast Ratio	30000:1
Brightness (Lumens)	4000
Light Source	UHP Lamp

Light Source Life Maximum Hours	15000
Maximum Supported Resolution	1920 x 1200
Horizontal Sync. Range (KHz)	15 ~ 97.55
Vertical Sync. Range (Hz)	54 ~ 85
Uniformity (%)	80

## Optical

Lens	1.1x
Lens Zoom Adjustment	Manual
Optional Lenses	-
Image Offset (%)	115
Focal Length (mm)	21.85 ~ 24.01
F-Stop	2.41
Vertical Lens shift (%)	-
Horizontal Lens shift (%)	-
Keystone Adjustment	Manual/Automatic
Vertical Keystone Correction	± 40°
Horizontal Keystone Correction	-
Projection Factor	1.94 ~ 2.16:1
Projection Distance (Meters/Feet)	1.2 ~ 12.0 / 3.94 ~ 39.36
Optical Zoom	1.1:1
Digital Zoom Demagnification / Magnification	0.8x ~ 2.0x
Focus Adjustment	Manual

## Conectivity

Inputs	Mini D-sub 15-pin (VGA), S-Video, HDMI™ 1.4, 3.5 mm Stereo Mini Jack, USB-A for Service
--------	---

Outputs	3.5 mm Stereo Mini Jack, Powered USB-A for Wireless Dongle
Networking & Control	-
Embedded System	-
3D	Full 3D All Major Formats

## Power

Power Supply	100 ~ 240 V AC; 50 ~ 60 Hz
Power Consumption Max (W)	267
Power Consumption Min (W)	210
Power Consumption Network Standby (W)	-
Power Consumption Standby (W)	<0.5

## General

Product Dimensions (L x W x H) (mm / in)	313 x 236 x 96.4 / 12.4 x 9.3 x 3.8
Product Weight (Kilograms/Pounds)	2.9 / 6.4
Packaged Dimensions (L x W x H) (mm / in)	395 x 337 x 166 / 15.6 x 13.3 x 6.5
Packaged Weight (Kilograms/Pounds)	4.1 / 9.0
Fan Noise (dB)	27
Audio (W)	1 x 3
Operating Temperature (Celsius/Fahrenheit)	5 ~ 40 / 41 ~ 104
Operating Humidity (%)	10 ~ 85
Max Operating Altitude (meters / feet)	3048 / 10000
Storage Temperature (Celsius/Fahrenheit)	-10 ~ 60 / 14 ~ 140

Storage Humidity (%)	10 ~ 85
Security	Kensington Security Slot™, PIN Code Lock & Timer
Safety and Regulatory	CB, CE, EAC, cTUVus, CCC, FCC, UKCA, NOM, PSB, BIS
Environmental	WEEE, EU RoHS, China RoHS, CEL, CECP

Copyright © 2024, InFocus and its logo is a registered trademark of InFocus Corporation. Maxnerva Technology Services Limited is the licensee of the registered trademark. All other product names and company names used herein are for identification purposes only and may be trademarks or registered trademarks of their respective owners. Errors and omissions excepted; all specifications are subject to change without notice. All images are for representation purposes only and may be simulated.