

Specification

Model	CR405X		CR355W	CR335U
Optical Spec.				
Brightness (Lumens)	4000		3500	3300
Display Technology	3LCD			
Contract Ratio	15000:1(with IRIS&ECO mode)			
Resolution	XGA (1024x768)	WXGA (1280 x 800)		WUXGA (1920*1200)
Lamp Consumption	Philips:218W			Philips:225W
Noice	ECO: MAX 34.9dB ; Normal: 38.9dB			
Lamp Life time	5000H(Normal) /10000H(ECO)			
Display Panel	3x0.63"	3x0.59"		3x0.64"
Aspect Ratio	4:3(Standard) / 16:9 (Compatible)	16:10(Standard) / 4:3 (Compatible)		
Projection Lens				
Focus	Manual			
Throw Ratio	0.46 : 1			
F	F=1.8			
f	f=6.08mm			
Screen Size	0.455~0.943m(50"~100")	0.484~1.004m(50"~100")		0.484~1.004m(50"~100")
Generic Spec.				
Speaker	1*10W			
Scranning Frequency	Hsync Frequency 15~100KHz / Vsync Frequency 48~85Hz			
Computer Signal Input	PC,VGA, SVGA, XGA, SXGA,WXGA,UXGA,WUXGA,Mac			
Videp Compatibility	PAL, SECAM, NTSC 4.43, PAL-M, PAL-N, 480i, 480p, 576i, 576p, 720p, 1080p and 1080i			
Power Consumption	270W			280W
ECO Standby Mode Power Consumption	<0.5W			
Network standby Power Consumption	<3W			
Keystone Correction	V: ±30°(auto+manual), H: ±15°(manual), Pincushion/Barrel Correction, Corner Keystone			V: ±15°(auto+manual), H: ±15°(manual) Corner Keystone
OSD(Languages)	26 languages: English, German, French, Italian, Spanish, Polish, Swedish, Dutch ,Portugese, Japanese, Simplified Chinese, Traditional Chinese, Korea, Russian, Arabic, Turkish, Finnish, Norwegian, Danish, Indonesian, Hungarian, Czech, Kazak,Vietnamese,Thai, Farsi			
Input Terminals	VGA x2, Audio in (mini jack,3.5mm) x1, YCbCr/ Component x1(share with VGA in1), Video x1; Audio in(L/R)--RCAx2, S-video x1(share with VGA in1), HDMI x2(One is Compatible with MHL), USB-Ax1 (support MemeoryViewer and WiFi Dongle(Optional)), USB-Bx1(Display), RJ45x1(Display)			
Output Terminals	VGA x1(Share with VGA IN 2), Audio out (mini-jack,3.5mm) x1			
Other Terminals	RS-232x1, RJ45 x1(for control), USB-Bx1(for up-grade), Remotr Control reciver x1			
Mechanical Spec.				
Power Supply	AC 100 – 240 V ~ 50-60 Hz			
Net. Weight(KG)	4 kg			
Max Dimensions(WxHxDmm)	347(W) x 341(D) x 142(H) mm			
Standard Accessories				

*specifications subject to change without notice.

Projection distance

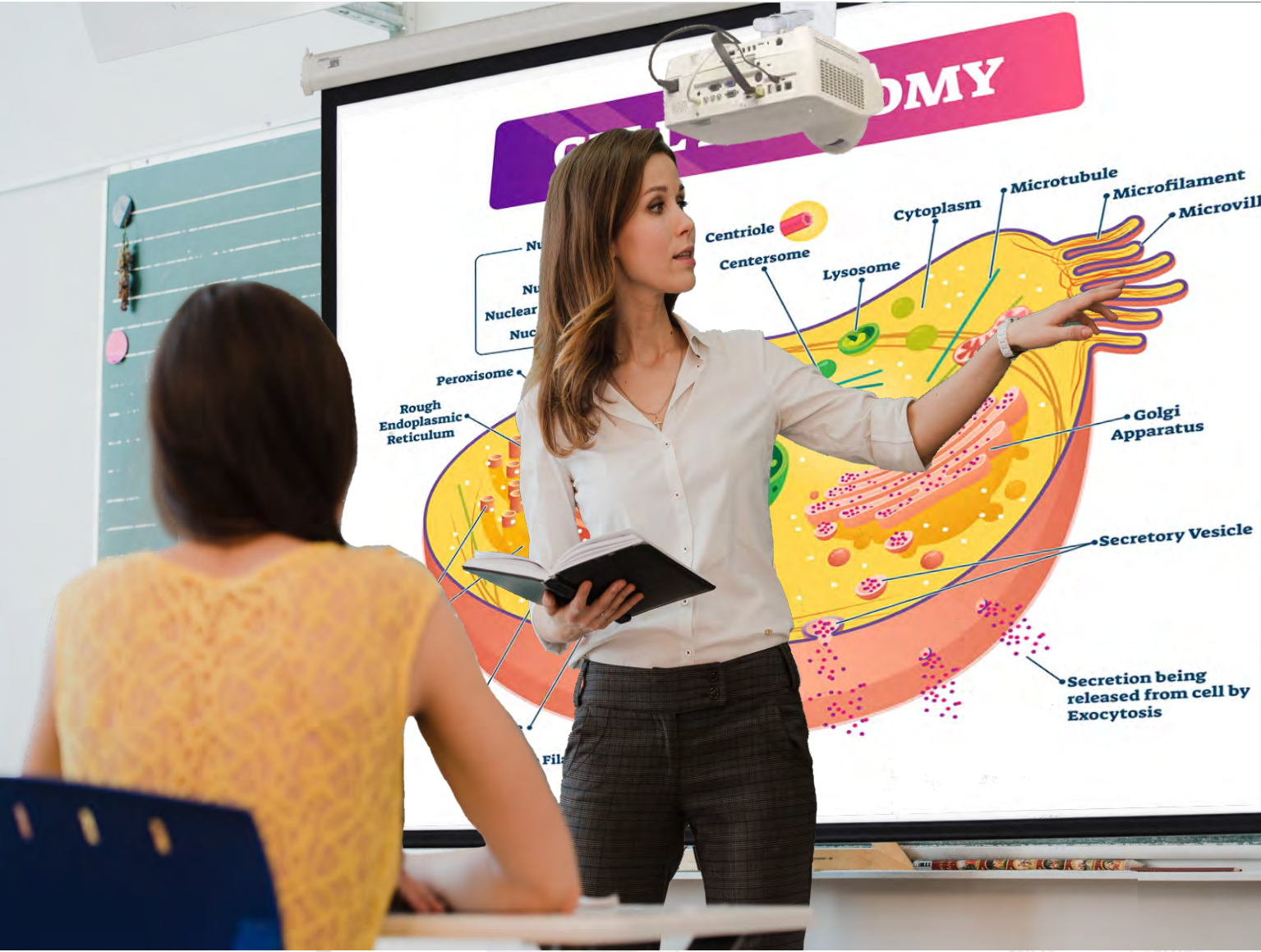
*All measurements are approximate and may vary from the actual sizes.

Model	Screen Size	4:3	16:9
		Distance	Distance
CR405X	50"	0.455m	0.498m
	60"	0.552m	0.605m
	70"	0.65m	0.711m
	80"	0.748m	0.817m
	90"	0.845m	0.924m
	100"	0.943m	1.03m

Model	Screen Size	16:10	16:9
		Distance	Distance
CR355W/ CR335U	50"	0.484m	0.498m
	60"	0.587m	0.605m
	70"	0.692m	0.711m
	80"	0.796m	0.817m
	90"	0.9m	0.924m
	100"	1.04m	1.03m

EDI

CR405X / CR355W / CR335U



Short Throw Projector

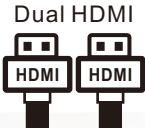
Short throw design can let the projector to be installed just above the screen. A great benefit is to allow the presenter won't need to stand in the beam of projected light and create shadows on the image.

- Latest IRIS technology
 - 3LCD color balance
 - Powerful correction function
 - Plentiful and practical projector display modes
- Up to 10,000 hrs lamp life time(ECO)
 - Available display via USB or RJ45 cable
 - Short Throw Projection(0.46:1)



K LASER Group (Projector BU)
<http://www.everestdisplay.com.tw>

Email: yctang@klasergroup.com



◆ The best choice in classroom and meeting room.

The series provides 3300lm ~ 4000lm brightness in the different XGA, WXGA, WUXGA resolution, including all the essential feature displayed in classrooms and meeting rooms.



◆ Vivid color performance and image quality.

Using with 3LCD technology, it outputs vivid color performance, exquisite picture quality with different brightness to show a clear, bright, natural images in the business presentation. It also engages teacher and students particular experience in the teaching and learning.



Blue Sky



Red Flower

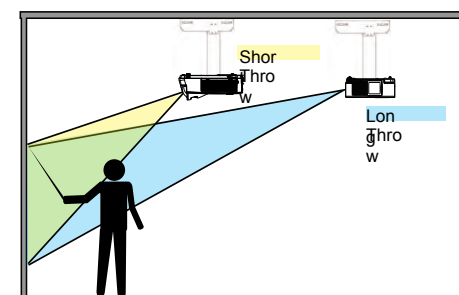


Green Tree

◆ Short Throw Distance

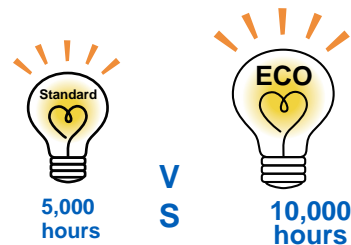
The teacher can stand in front of the screen while teaching and presentation, and will not be directly irradiated by the projector light beam to protect the lecturer's eyes.

Throw Ratio: 80" @ 75cm (XGA) / 79cm(WXGA, WUXGA).



◆ New stable and long-life lamp up to 10,000 hours in ECO mode time.

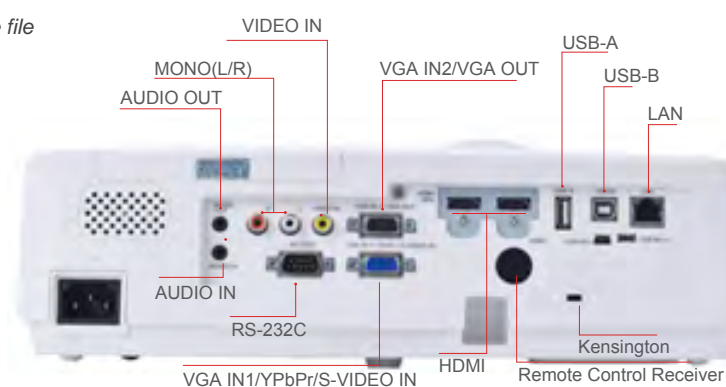
Up to 10,000 hours life time (ECO mode) it can reduce the cost of replace lamp and save maintenance cost. Under the normal condition of school environment it can exceed 5 years without replace lamp.



◆ Multiple interface.

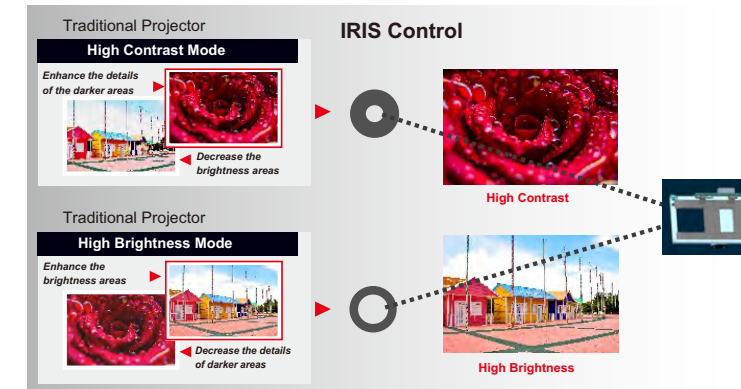
It provide not only the mainstream interface (VGA, 2-HDMI) but LAN & USB-B terminals can support any kind of signal display. USB-A (2.0) slot can support USB display it can directly project videos and pictures via USB slot.

* USB-A slot has limit with files, please make sure that the file can be read or not before use.



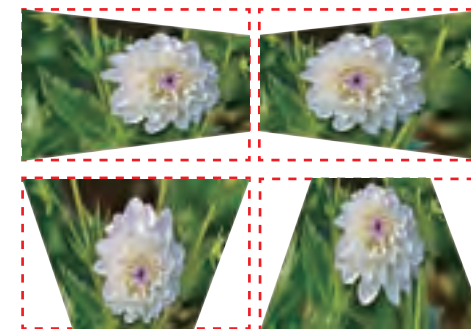
◆ Contrast: The latest IRIS increase the contrast.

Using the latest dynamic IRIS contrast enhancement technology, it greatly enhance the contrast ratio. Compared to traditional technology it can provide the highest 25000:1 to show the purest black, clear picture, structured and subtle image to bring superior visual impact in the presentation.



◆ Powerful correction function.

In addition to the conventional Vertical and Horizontal keystone correction, it still provides 4 Corner keystone and Pincushion, Barrel Correction for installer to install on the curve blackboard and many more non-standard surfaces. *ANWU335ST doesn't support Pincushion/Barrel Correction.



Horizontal / Vertical Keystone



4 Corner Keystone



Pincushion / Barrel

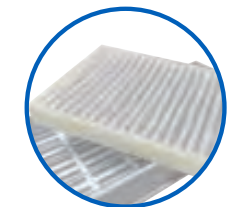
◆ Superior Dust proof design.

High efficiency ESD filter can make sure projector under the clean situation operation to extend the projector life and ensure the image quality.

Projector built-in an auto-detected system, always checks the projector's air volume, and automatically detects whether the filter is blocked. It can actively give the alarm to clean up the filter message to protect the machine and improve the service life.

Superior Dust proof design

Quick-release Filter
Mak it easy to installed



◆ Advanced Network projection.

*Optional function.



It is possible via the network (wired LAN / wireless LAN) to project max 4 personal information to achieve multi-screen projection function.

- (1) Optional wireless dongle
- (2) Wired connection to hub or wireless signal to router

Download and install the "pwPresenter" application to be compatible with your OS and also connect the projector under Windows or Mac system.

