

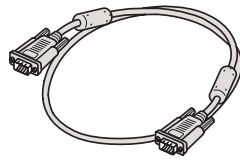
START HERE

Connect the projector to your laptop

For most setups, you'll need just these two cables:



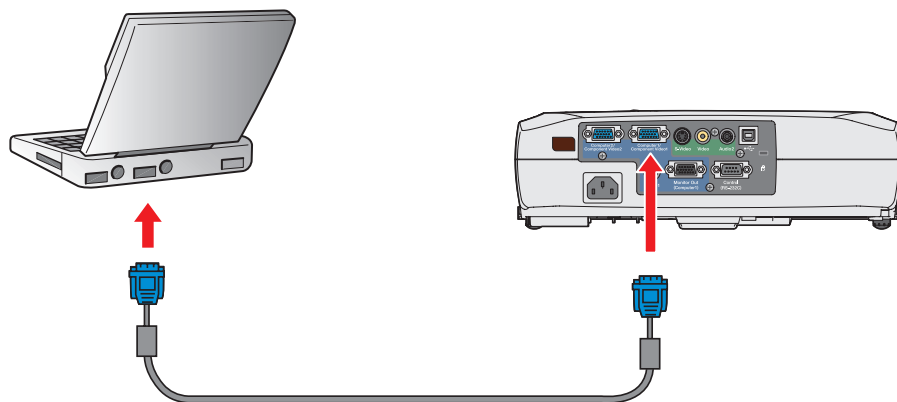
Power cord



Computer cable



- 1 Make sure your projector and laptop are turned off.
- 2 Connect one end of the computer cable to the **Computer1/Component Video1** or **Computer2/Component Video2** port on the projector.

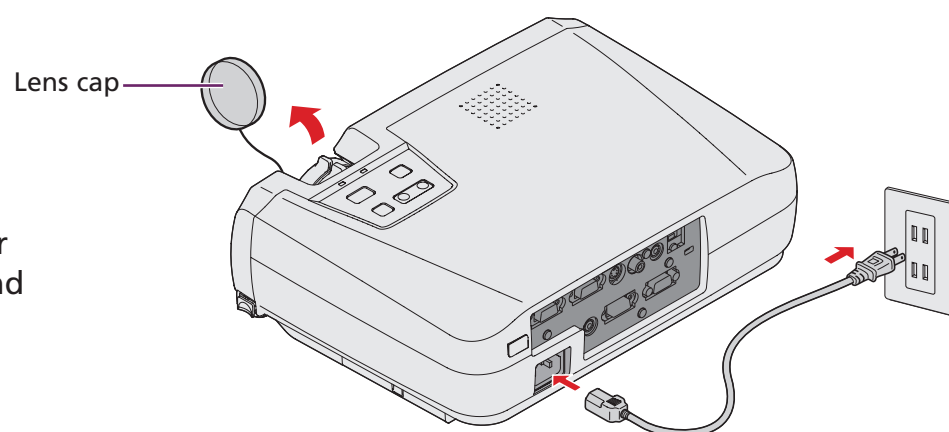


Follow these instructions to connect the projector to your laptop. To connect other devices—such as a VCR, DVD, or desktop PC—and for complete instructions on using the projector, see your *User's Guide*.

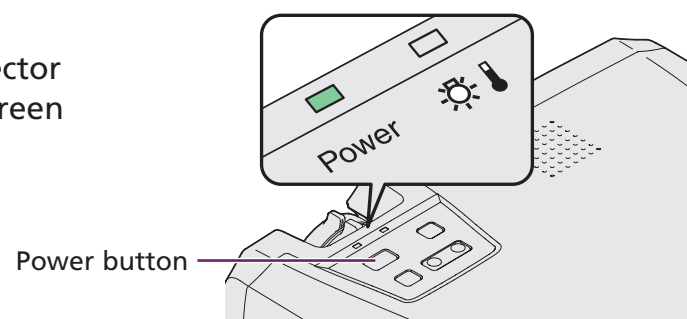
- 3 Connect the other end to your laptop's video or monitor port. If you can't connect the cable to your Macintosh® PowerBook®, you may need to use an adapter. See your *User's Guide* for instructions.

Turn on your equipment

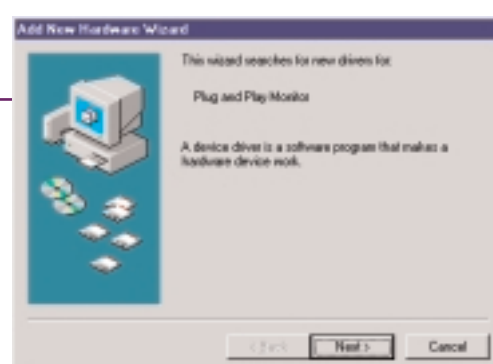
- 1 Remove the lens cap.
- 2 Connect the power cord to your projector and plug the other end into an electrical outlet.



- 3 Press the **Power** button. The projector beeps, and the Power light flashes green and then stays on.



- 4 Turn on or restart your laptop. (Windows® only: If you see this Add New Hardware screen, click **Cancel**.)



Caution: Before unplugging the projector...

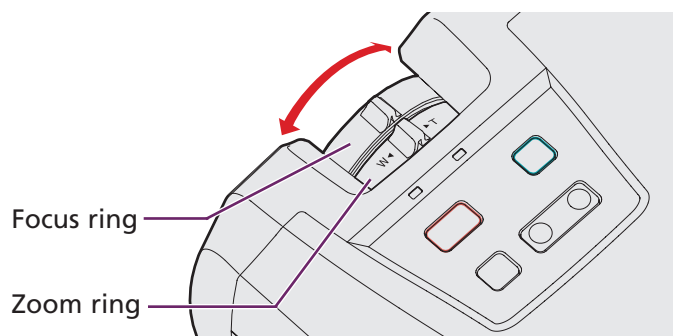
To shut the projector down properly:

1. Press the **Power** button twice. Let the projector cool while the Power light flashes orange (about 20 seconds).
2. Once the light stops flashing and stays on, it's safe to unplug the projector.

Never unplug the projector when the Power light is green or flashing orange.

Adjust the image

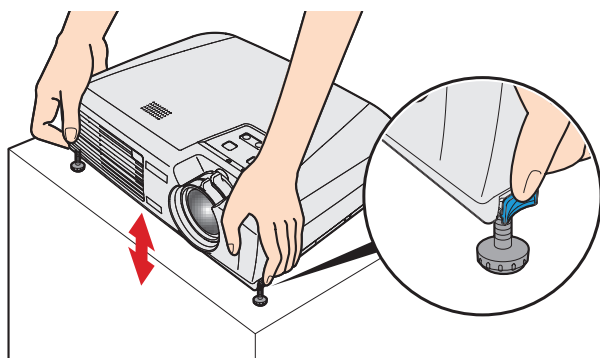
- 1 Rotate the focus ring to sharpen the image.






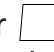
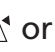

Note: If no image appears, see the instructions to the right.

- 2 Rotate the zoom ring to reduce or enlarge the image. Turn to **W** (wide) to enlarge or **T** (tele) to reduce. (You can also move the projector closer to or farther from the screen.)

- 3 To raise the image, press the foot release levers inward and lift the front of the projector. Once the image is positioned where you want it, release the levers to lock the feet in position.



- 4 If your image looks like  or , you've placed the projector off to one side of the screen, at an angle. Move it directly in front of the center of the screen, facing the screen squarely.

- 5 If your image looks like  or , the Auto Keystone correction feature may have been disabled. You can manually adjust the keystone correction value by pressing the  or  side of the **Keystone** button on the projector. Or, to re-enable Auto Keystone correction, refer to your *User's Guide*.

Where to get help

Telephone Support Services

To use the EPSON PrivateLine® Support service, call (800) 637-7661 and enter the PIN on the EPSON PrivateLine Support card included in your Start Here kit. This service is available 6 AM to 6 PM, Pacific Time, Monday through Friday, for the duration of your warranty period. You may also speak with a projector support specialist by dialing one of these numbers:

U.S.: (562) 276-4394, 6 AM to 6 PM, Pacific Time, Monday through Friday
Canada: (905) 709-3839, 6 AM to 6 PM, Pacific Time, Monday through Friday

Toll or long distance charges may apply.

Electronic Support Services

EPSON provides technical assistance through electronic support services 24 hours a day at <http://support.epson.com>. For tips, templates, and training for developing successful presentations go to <http://www.presentersonline.com>.

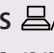
If you see a blank screen

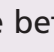
If you see a blank screen or the **No signal** message after turning on your laptop, check the following:



- Make sure the Power light on the projector is green and not flashing and the lens cover is off.
- You may need to press the **Source** button on top of the projector to select **Computer 1** or **Computer 2**. (Allow a few seconds for the projector to sync up after pressing it.)
- Try turning off the laptop and restarting it.
- Check the **Input Signal** setting in the Image menu to make sure it matches the port to which you connected the computer. See your *User's Guide*.

If you're using a Windows laptop:

- Hold down the **Fn** key and press the function key that lets you display on an external monitor. It may have an icon such as , or it may be labelled **CRT/LCD**. Allow a few seconds for the projector to sync up after pressing it.

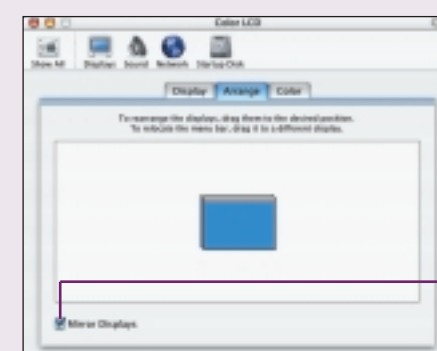
On most systems, the  or **CRT/LCD** key lets you toggle between the LCD screen and the projector, or display on both at the same time.

- You might need to use the Display utility in the Control Panel to enable both the LCD screen and external monitor port. Check your laptop's manual or online help for details.

If you're using a Macintosh PowerBook:

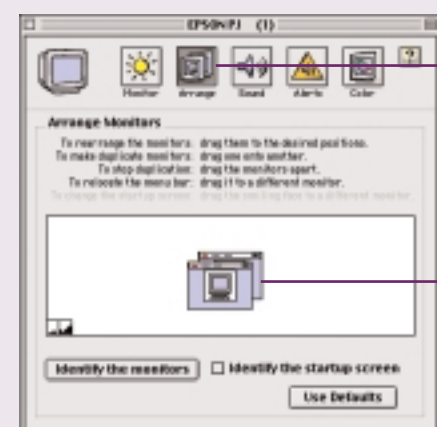
OS X:

1. From the Apple menu, select **System Preferences**, then click **Displays**.
2. Select **VGA Display** or **Color LCD**, click **Arrange** or **Arrangement**, and click **Mirror Displays**.



OS 9.x or earlier:

1. From the Apple® menu, select **Control Panels**, then click **Monitors** or **Monitors and Sound**.
2. Click **Arrange**.



3. Drag one monitor icon on top of the other. This lets you display on the projector screen as well as the LCD screen.

If the **Arrange** option isn't available, you may need to select one of the Simulscan resolution settings. See your *User's Guide* for instructions.