

SPECIFICATIONS

Model	S2235	S2295	S2335	S2325W
Display Technology	0.63 " 3LCD	0.63 " 3LCD	0.63 " 3LCD	0.59 " 3LCD
Brightness (ANSI)	2500Lumens	2800Lumens	3100Lumens	3100Lumens
Native Resolution	XGA (1024 x 768)	XGA (1024 x 768)	XGA (1024 x 768)	WXGA (1280 x 800)
Max Computer Input	UXGA	UXGA	UXGA	UXGA
Max Video Input	1080i	1080p	1080p	1080p
Contrast Ratio	800:1	2000:1	2000:1	2000:1
Lens Type	Fixed Zoom & Lens	Fixed Zoom & Lens	Fixed Zoom & Lens	Fixed Zoom & Lens
Throw Ratio	81.5"@1m	81.5"@1m	81.5"@1m	76"@1m
Throw Distance	0.598m-3.789m	0.598m-3.789m	0.598m-3.789m	0.636m-4.020m
Native Aspect Ratio	4:3 (Native) 16:9 (Compatible)	4:3 (Native) 16:9 (Compatible)	4:3 (Native) 16:9 (Compatible)	16:10 (Native) 4:3 (Compatible)*
Keystone Correction	Digital, ±30 °	Digital, ±30 °	Digital, ±30 °	Digital, ±30 °
Closed Caption	Yes	Yes	Yes	Yes
Inputs	S-Video×1,component×1, Video×1,VGA×2, Audio in ×1, RCA(L/R) in×1, RS-232×1	S-Video×1,component×1, Video×./VGA×2, Audio in ×1, RCA(L/R) in×1,HDMI×1, RS-232×1,RJ45×1	S-Video×1,component×1, Video×./VGA×2, Audio in ×1,RCA(L/R) in×1, HDMI×1,RS-232×1, RJ45×1	S-Video×1,component×1, Video×./VGA×2, Audio in ×1,RCA(L/R) in×1, HDMI×1,RS-232×1, RJ45×1
Outputs	VGA×1,Mini-Jack ×1	VGA×1,Mini-Jack ×1	VGA×1,Mini-Jack ×1	VGA×1,Mini-Jack ×1
Speaker	Stereo 2x3W	Stereo 2x3W	Stereo 2x3W	Stereo 2x3W
Network Control	N/A	Wired LAN Monitor & Control	Wired LAN Monitor & Control	Wired LAN Monitor & Control
Lamp	230W	230W	230W	230W
Lamp Life (Nor/Eco)	3,000H/4,000H	3,000H/4,000H	3,000H/4,000H	3,000H/4,000H
Standby Power	Below 1W	Below 1W	Below 1W	Below 1W
Power Consumption	280W	280W	280W	280W
Operating Temp.	5°C~35°C	5°C~35°C	5°C~35°C	5°C~35°C
Storage Temp.	-10°C~60°C	-10°C~60°C	-10°C~60°C	-10°C~60°C
Key Features	Customised startup logo; Auto ceiling; Colorboards; Blankscreen Hotkey; Closed Captioning; Anti-theft Bar; Easy Maintenance	Customised startup logo; Auto ceiling; Colorboards; Blankscreen Hotkey; Closed Captioning; Anti-theft Bar; Easy Maintenance	Customised startup logo; Auto ceiling; Colorboards; Blankscreen Hotkey; Closed Captioning; Anti-theft Bar; Easy Maintenance	Customised startup logo; Auto ceiling; Colorboards; Blankscreen Hotkey; Closed Captioning; Anti-theft Bar; Easy Maintenance
Projection Size	50"~200"	50"~200"	50"~200"	50"~200"
Weight	8.37LB	8.37LB	8.37LB	8.37LB

* Product specifications, terms, and offerings are subject to change at any time without prior notice.
** Actual lamp life may vary based on the ambient environment and projector usage. Conditions that may affect lamp life include temperature, altitude, and rapidly switching the projector on and off.

ASK Proxima co.,LIMITED
http://www.askproxima.eu.com



Distributor

ASK Proxima



Inorganic
LCD Panel



Closed
Caption



Hybrid Filter
Cooling
Design



High
Contrast
Ratio



HDMI

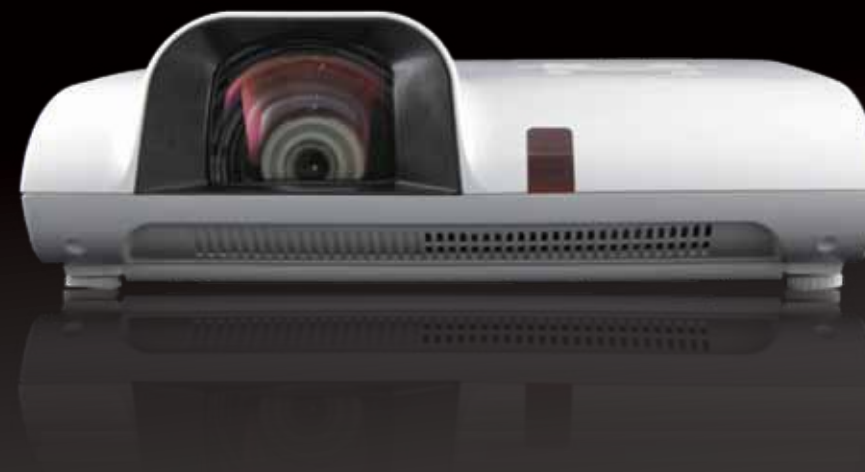
ASK Proxima

ASK, founded in 1984, originally conducted R&D in LCD technology for the production of LCD screens but later turned its focus towards developing overhead panels for projecting images in larger formats.

In 1991, Tandberg Data, a world leader in data storage products, assumed ownership of the firm, which rejuvenates ASK by turning its target to projector manufacture by collaborating with Polaroid under the label “For Polaroid – By ASK”. The company undertook an aggressive marketing campaign, building a network of distributors in countries all over Europe and Asia.

In 1998, to expand the market, ASK acquired its American competitor, Proxima Corporation. Later the company changed its name to Proxima ASA in 2000, and as of 2005, the company was the second largest in the projector industry. The year after, the company merged with the industry leader, InFocus Corporation.

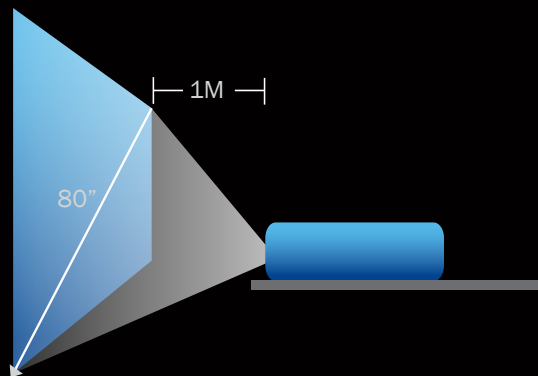
In 2010, ASK Proxima went through another round of re-structuring and started to implement a new strategy to compete in the world market.



Professional Short Throw Feature

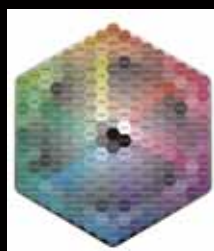
Ricoh short-throw lens empowers the projector to project an image up to 80" (diagonally) within limited distance of only 1M.

Audiences can enjoy a large image without shadow and glare even in limited space.



3LCD Color Re-Production

3LCD is the technology that powers the majority of all education, business, and home theater projectors and also is a sophisticated, innovative technology that utilizes 3 chips to deliver vibrant, true-to-life and consistent images. 3-Chip LCD Technology is through the light source projects white light onto a combination of mirrors that split the light into its three basic video colors. Each LCD chip takes the electrical signal it receives and creates an image. The three color images are combined using a prism to form a full-color image. The vibrant, full-color image passes through a lens and projected onto a screen.



Hybrid-Filter & Powerful Cooling System

High air flow cooling scenario

Optimized cooling system: multiple cooling outlets and inlets design, effective and powerful dispersion of heat even in high altitude areas.



Hybrid Filter

The projector uses highly reliable filter. The filter can use for a long duration of time which can save a great deal of maintenance time.



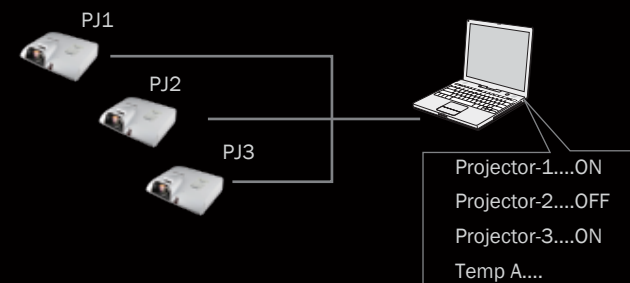
Easy Lamp Replacement

The lamp cover is on the top of the projector. Even when mounted on the ceiling, the lamp can be easily replaced.



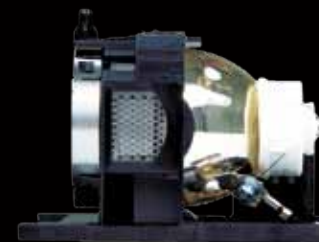
Wired Network Control

By wired connection to RJ45, the user can control or monitor all projectors in distance - on/off, configuration, viewing lamp time and operating status.



4,000Hrs Long Lamp Life

New generation USHIO 230W lamp is advanced in smaller size, high brightness, no glare and more reliable. High brightness with longer life (4,000Hrs ECO).



Leading UHP Lamp

Automatic Image Reverse

Automatic ceiling projection without additional settings.



Security

An improved Security Bar allows attachment to a convenient place by a cable or chain. There is also a Kensington® security slot for using a lock to attach a cable. PIN lock ensures limited access.



Customized Splash Screens



Vast Humanized Details

- User-friendly operations system
- Up to 19 OSD languages
- Scale ratio 4:3/16:9/16:10
- Customized splash screens
- Adjustable menu position
- Boot authorization
(To setup Pin-code from keypads and remote control)
- Service messenger alert
- Rear-projection mode
- Built-in 2*3W stereo speakers.