



### Epson Support Services

Epson PowerLite Professional Series projectors are backed by a **three-year limited warranty**, which includes 24-hour access to a service and **support line** manned by AV/network specialists. It also includes access to a website where you can access **installation documents**. And, with our included **Road Service program**, you can receive next-day-shipping replacement products throughout the duration of the warranty period.

 **Better Products for a Better Future™**

For more information on Epson's environmental programs, go to [eco.epson.com](http://eco.epson.com)

**EPSON®**  
EXCEED YOUR VISION

**Epson America, Inc.**  
3840 Kilroy Airport Way, Long Beach, CA 90806

**Epson Canada, Ltd.**  
3771 Victoria Park Avenue, Toronto, Ontario M1W 3Z5

**[www.epson.com](http://www.epson.com)**  
**[www.epson.ca](http://www.epson.ca)**

Specifications and terms are subject to change without notice. Epson C<sup>3</sup>Fine, Quick Corner and EasyMP are registered trademarks, Epson Exceed Your Vision is a registered logomark and Better Products for a Better Future is a trademark of Seiko Epson Corporation. PowerLite and PrivateLine are registered trademarks, and Epson Connection is a service mark of Epson America, Inc. All other product and brand names are trademarks and/or registered trademarks of their respective companies. Epson disclaims any and all rights in these marks. Copyright 2010 Epson America, Inc. CPD-30497 1/10

# PowerLite® Professional Series

PowerLite Pro Z8000WUNL

PowerLite Pro Z8050WNL

**EPSON®**  
EXCEED YOUR VISION



Quality and Reliability

Precision Control

Low Cost of Ownership



# Epson QRCC Commitment



# QRCC

## **Astounding Quality and Reliability**

With a wide array of innovative features, the Epson PowerLite Pro Z projectors ensure amazing presentations in virtually any setting. In fact, with the Epson PowerLite Pro Z Series, Epson takes technology one step further, offering an ultra-bright, WUXGA performer. This model, the PowerLite Pro Z8000WUNL, represents the perfect high-definition solution when presenting content from widescreen computers or high-definition devices. And, with Epson 3LCD, 3-chip technology, all Pro models are sure to deliver impressive image quality in true-to-life color.

## **Precision Control**

Designed with your installation needs in mind, these projectors offer the perfect solution for any auditorium, lecture hall or large boardroom. Engineered to easily interface and integrate with sophisticated programming and controller applications — both IP and RS-232 — these models work with modules and drivers that are readily available from professional, well-respected manufacturers of content devices. The Epson PowerLite Pro Z8050WNL even offers an advanced networking capability, including a unique feature that allows users to send message broadcasts and presentations over the network.

## **Low Cost of Ownership**

Designed to integrate with complex presentation systems, these projectors make installation and maintenance easy and affordable. Epson monitoring software gives system administrators the power to remotely monitor and control all of their projectors. One-touch air filter replacements and easy lamp access contribute to a low cost of ownership and offer added peace of mind. These full-featured performers even include a built-in closed-captioning decoder.

## **This is the Epson QRCC Commitment.**

## PowerLite Pro Z8000WUNL

Powerful combination of high brightness, high resolution and true-to-life color — **6000** lumens color light output, **6000** lumens white light output,<sup>1</sup> **WUXGA** widescreen, hi-def resolution and 3LCD, 3-chip technology.

### Quality and reliability

- **Core technology for added reliability** — durable 3LCD 3-chip technology; innovative cooling system and filter design
- **Digital connectivity for full Hi-Def 1080p performance** — HDMI with HDCP compliancy and DVI-D, both with high-grade video processing
- **Exceptional color fidelity** — broad color reproduction covers the DCI color gamut space for viewing movies as film producers intended
- **Greater detail with blacker blacks** — C<sup>2</sup>Fine<sup>®</sup> technology, up to 5000:1 contrast ratio, cinema filter

### Precision control

- **Center lens design** — makes it easy to align the projector with the screen
- **Powered lens** — motorized zoom, focus, and lens shift, controllable through the remote, RS-232 or IP
- **Ultra-wide lens shift capabilities** — vertical positioning of + or – 70%, + or – 20% horizontal
- **Six optional lenses** — including wide, rear and long-throw lenses designed to provide installation flexibility for auditoriums and lecture hall venues
- **Direct On and Direct Off** — allows a projector to be powered on/off by use of a wall switch

### Low cost of ownership

- **Protect your investment** — recommended 10,000-hour filter cleaning schedule<sup>2</sup> and easy, side-access filter
- **Easy monitor and control capabilities** — included Epson monitor software allows for remote monitor and control of Epson networked projectors
- **Value-added features** — Quick Corner<sup>®</sup> for independent image corner control; built-in closed captioning decoder; cable interface cover
- **Dual lamps with long lamp life** — up to 3500-hour lamp life in ECO Mode, up to 2500 hours in Normal Mode<sup>3</sup>



## PowerLite Pro Z8050WNL

Powerful combination of high brightness, high resolution, true-to-life color, and network control — **7000** lumens color light output, **7000** lumens white light output,<sup>1</sup> **WXGA** widescreen, hi-def resolution, networking features including **Message Broadcasting** and **EasyMP Network Projection**

### Quality and reliability

- **Core technology for added reliability** — durable 3LCD 3-chip technology; innovative cooling system and filter design
- **Digital connectivity for full Hi-Def 720p performance** — HDMI with HDCP compliancy and DVI-D, both with high-grade video processing
- **Exceptional color fidelity** — broad color reproduction covers the DCI color gamut space for viewing movies as film producers intended
- **Greater detail with blacker blacks** — C<sup>2</sup>Fine technology, up to 5000:1 contrast ratio, cinema filter

### Precision control

- **Center lens design** — makes it easy to align the projector with the screen
- **Powered lens** — motorized zoom, focus, and lens shift, controllable through the remote, RS-232 or IP
- **Ultra-wide lens shift capabilities** — vertical positioning of + or – 70%, + or – 20% horizontal
- **Six optional lenses** — including wide, rear and long-throw lenses designed to provide installation flexibility for auditoriums and lecture hall venues
- **Direct On and Direct Off** — allows a projector to be powered on/off by use of a wall switch

### Low cost of ownership

- **Protect your investment** — recommended 10,000-hour filter cleaning schedule<sup>2</sup> and easy, side-access filter
- **Easy monitor and control capabilities** — included Epson monitor software allows for remote monitor and control of Epson networked projectors
- **Value-added features** — Quick Corner for independent image corner control; built-in closed captioning decoder; cable interface cover
- **Dual lamps with long lamp life** — up to 3500-hour lamp life in ECO Mode, up to 2500 hours in Normal Mode<sup>3</sup>







## Quality and Reliability

- 3LCD, 3-chip technology
- Ultra high brightness – white and color
- Up to 5000:1 contrast ratio
- WUXGA resolution (Z8000WUNL)
- WXGA resolution (Z8050WNL)
- High-grade video chip processor
- Dual lamps

## 3LCD Technology — for Quality and Color that's Beyond Amazing

3LCD technology delivers amazing color and detail. Whether it's big-screen entertainment or a classroom demonstration, 3LCD technology takes video performance to the next level. Delivering legendary image quality, this innovative technology always ensures powerful visual presentations.

- **3 chips in every projector for full-time, true-to-life color**

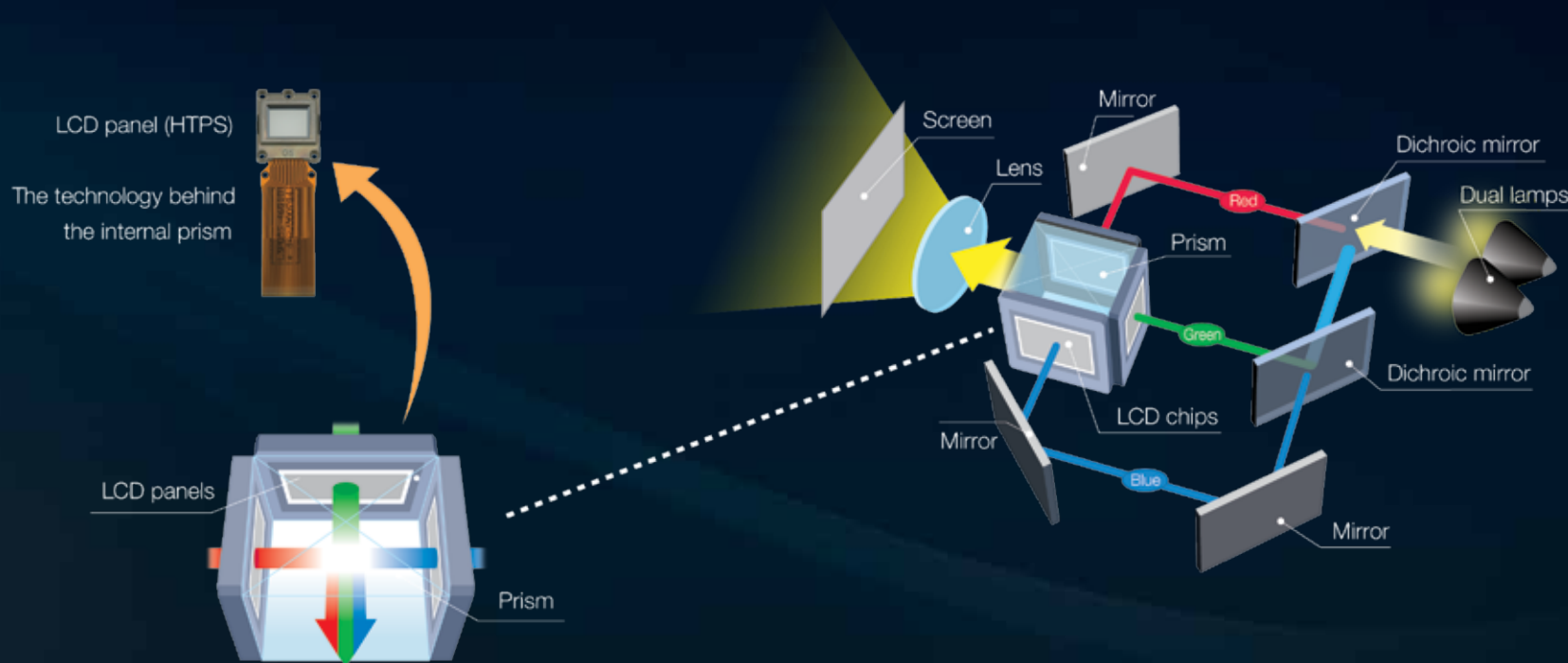
With its 3-chip design, 3LCD technology delivers clear and vibrant images that are so true to life, you may not believe your eyes.

- **Road-tested reliability**

3LCD technology has been the world leader for 20 years and has consistently been the choice for users who demand long-life performance and reliability.

- **No color wheel**

In contrast to 3-chip, 3LCD projectors, 1-chip, DLP projectors use a rotating color wheel that spins at a rapid speed, only displaying colors sequentially, which can result in color breakup or the "rainbow effect".



For more information on 3LCD technology, go to [www.3lcd.com](http://www.3lcd.com)



## Beyond Hi-Def

WUXGA resolution delivers high quality images and crisp, sharp text without any distortion or scaling. The Z8000WUNL can display two independent A4-sized windows side by side at the same time. You can also display HDTV content at its native resolution. WUXGA resolution is ideal for applications like Blu-Ray® content, graphic intensive programs, and any application requiring exceptional detail.



## Powerful and Bright

Epson PowerLite Pro Z projectors are **powerful and bright**. And, they can be ceiling mounted in order to better reach large audiences. With a unique mix innovative features and a smart design, these projectors offer easy installation, operation and monitoring capabilities to dramatically enhance the **visual experience of your audience**. And, they're built to operate in virtually any environment. These projectors are ideal for large corporate meetings, lecture halls, cultural institutions, digital signage and houses of worship.

## Stringent Quality and Assurance Controls

Each Epson projector undergoes over 160 functionality tests.

## High-durability, 10,000-hour Performance Filter

Includes a high-performance, highly efficient, “electrostatic” air filter, which has a recommended 10,000-hour filter cleaning schedule.<sup>2</sup>

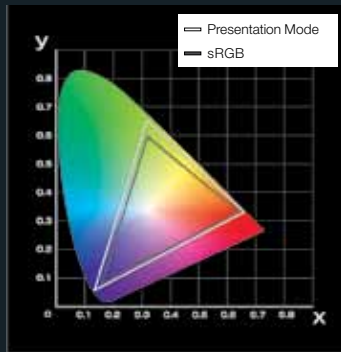
## Made to Operate in a Wide Range of Temperatures and High-altitude Locations

From 32 to 113 °F and up to 10,000 feet.

## Three-year Limited Warranty

Epson PowerLite Pro Z projectors are backed by a three-year limited warranty, including Road-Service replacement, for reliability you can count on.

### ■ Presentation Mode vs sRGB

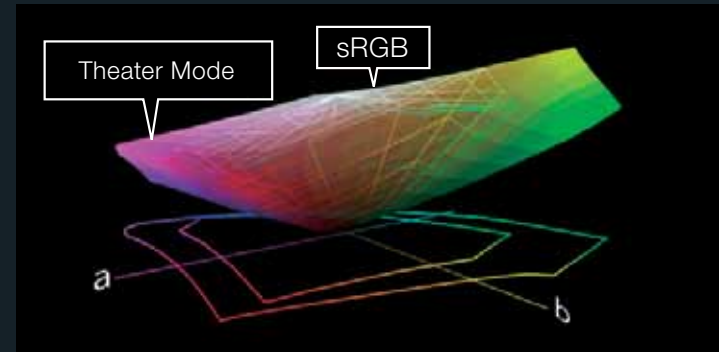


Comparison of color reproduction gamut: Presentation Mode vs. sRGB

### ■ Theater Mode vs sRGB



Two-dimensional comparison of color reproduction gamut: Theater Mode vs. sRGB



Three-dimensional comparison of color reproduction gamut: Theater Mode vs. sRGB

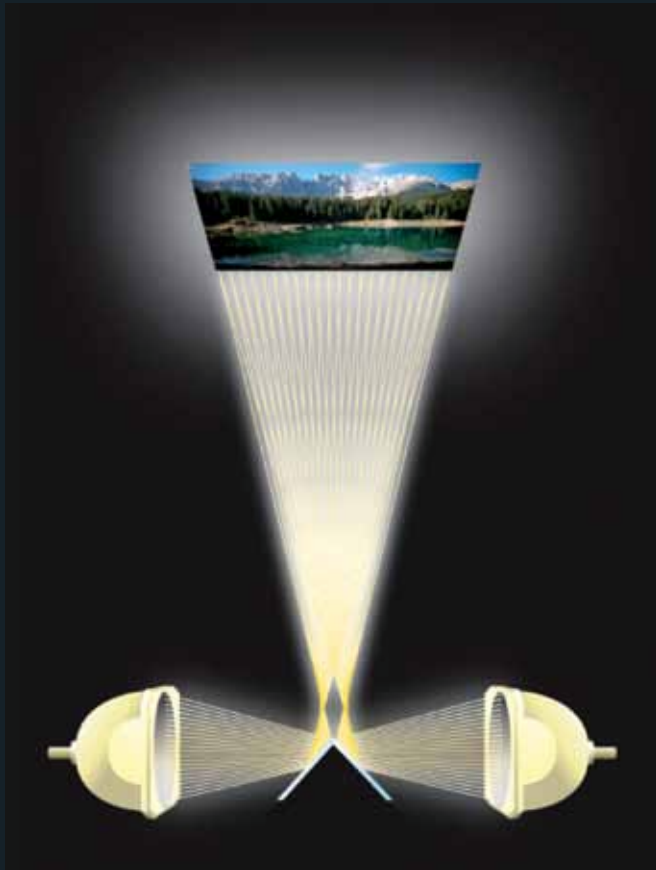
International color standard established by IEC.

## Dual Lamps

With two lamps (330 W each), PowerLite Pro Z Series projectors boast a dual lamp system that eliminates the risk of interruption. If one lamp were to fail, operation would continue, using the other lamp.

Each lamp has a long lamp life — up to 3500-hour lamp life in ECO Mode, up to 2500 hours in Normal Mode.<sup>3</sup>

Replacements are made easy with free and unobstructed access to the rear control panel.







**Ideal for Large Meeting Halls**

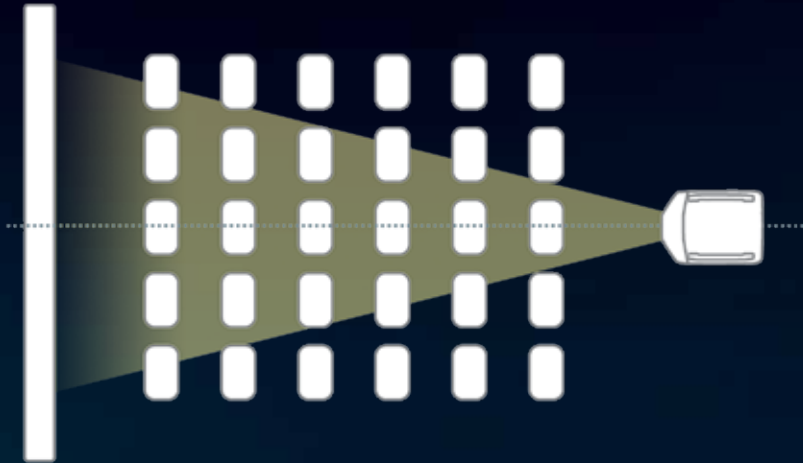


# Precision Control

- Centered lens
- Integrated design
- Flexible lens choices
- Quick Corner
- Direct power on/off
- Vertical/horizontal lens shift
- Powered lens shift, zoom and focus
- Innovative cooling system

## Centered Lens Design

With its centered lens design, the PowerLite Pro Z Series makes installations easy to plan. Positioning the ceiling mount, screen, and projector can be performed individually and independent of one another.



## Integrated Design

A new, innovative layout and cable cover design conceals the cabling for a pleasing, aesthetic look.

Streamlined design with integrated handles simplifies installation



### Keeps cables neat

The terminal inputs on the front have a cover that matches the case design to keep them tucked neatly out of sight.

Operation panel is located on the back for ease of operation while looking at the screen.



# Flexible Lens Choices

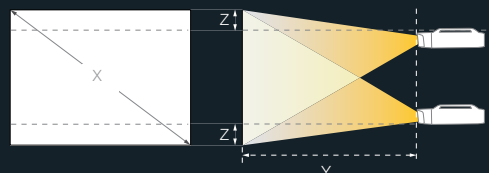
There are **six different lens options** including a rear-projection lens. This allows users to choose the most suitable lens for the environment. Changing the lens is easy with the bayonet style mount.



The optional lenses offer a range of rear, wide, long and middle-throw capabilities to suit any need.

# Standard Lens

Works with both models



Projection distance of standard WUXGA model

16:10 Screen Size	Shortest (Wide)	Longest (Tele)
X (screen size)	Y (cm / inch)	
60"	221 / 87	361 / 142
80"	297 / 117	484 / 191
100"	374 / 147	607 / 239
110"	412 / 162	669 / 263
120"	450 / 177	730 / 287
300"	1137 / 448	1837 / 723
500"	1900 / 748	3067 / 1207

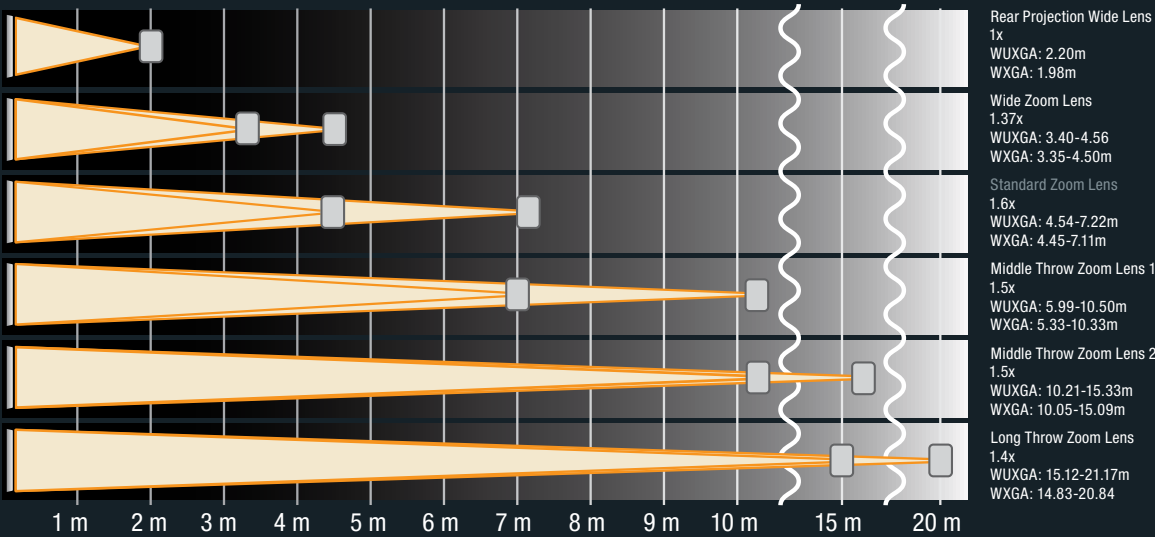
Projection distance of standard WXGA model

16:10 Screen Size	Shortest (Wide)	Longest (Tele)
X (screen size / dimensions)	Y (cm / inch)	
60"	217 / 86	355 / 140
80"	292 / 115	476 / 188
100"	368 / 145	597 / 235
110"	405 / 160	658 / 259
120"	443 / 174	719 / 283
300"	1119 / 441	1808 / 712
500"	1870 / 736	3019 / 1189

# Six Optional Bayonet Lenses

With a 1.6x standard lens, the PowerLite Pro Series offers increased placement flexibility. For even greater flexibility, Epson offers a total of six lenses with varying ranges including short, wide, and rear, along with mid- to long-throw lenses that allow users to choose the motorized lens most suited for their environment. A quick release lever allows for a quick, easy lens exchange. (Lens not included)

Throw distance for both models



## Easy Lens Replacement

Using optional lenses, these projectors can handle projection distances near and far. (Projection range: 2.0 m to 21.17 m, with a 120-inch/16:10 screen)

The standard lens is equipped with 1.6x zoom, allowing a broader projection distance range.

Projection distance for optional lenses

16:10 Screen Size	ELPLR04		ELPLM06		ELPLM07		ELPLL07		ELPLW04	
	Rear Projection Wide Lens		Middle Throw Zoom Lens #1		Middle Throw Zoom Lens #2		Long Throw Zoom Lens		Wide Zoom Lens	
	Shortest (Wide)	Longest (Tele)	Shortest (Wide)	Longest (Tele)	Shortest (Wide)	Longest (Tele)	Shortest (Wide)	Longest (Tele)	Shortest (Wide)	Longest (Tele)
X (screen size)	Y (cm / inch)		Y (cm / inch)		Y (cm / inch)		Y (cm / inch)		Y (cm / inch)	
60"	97 / 38		340 / 134	524 / 206	495 / 195	761 / 300	738 / 290	1043 / 410	166 / 65	229 / 90
80"	130 / 52		458 / 180	702 / 277	668 / 263	1022 / 402	994 / 391	1401 / 551	224 / 88	307 / 121
100"	165 / 65		576 / 227	881 / 347	841 / 331	1284 / 505	1251 / 492	1759 / 692	282 / 111	386 / 152
110"	182 / 72		635 / 250	971 / 382	927 / 365	1414 / 557	1379 / 543	1938 / 763	310 / 122	425 / 167
120"	200 / 79		1060 / 273	1060 / 417	1013 / 399	1545 / 608	1507 / 593	2117 / 833	339 / 134	464 / 183
300"	508 / 200		1755 / 691	2669 / 1051	2569 / 1011	3897 / 1534	3816 / 1502	5339 / 2102	859 / 338	1171 / 461
500"	852 / 335		2934 / 1155	4457 / 1755	2912 / 1146	6511 / 2563	6381 / 2512	8920 / 3512	1437 / 566	1957 / 770



## Brightness Excels in Large Classrooms

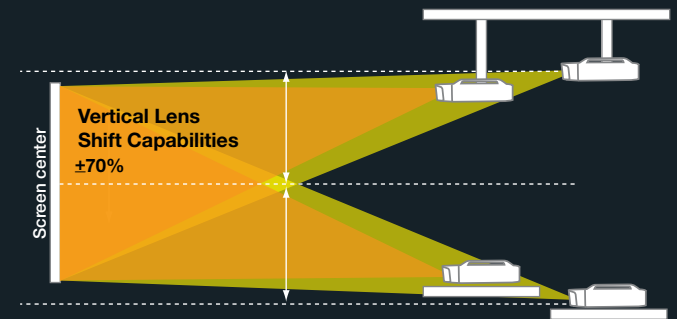
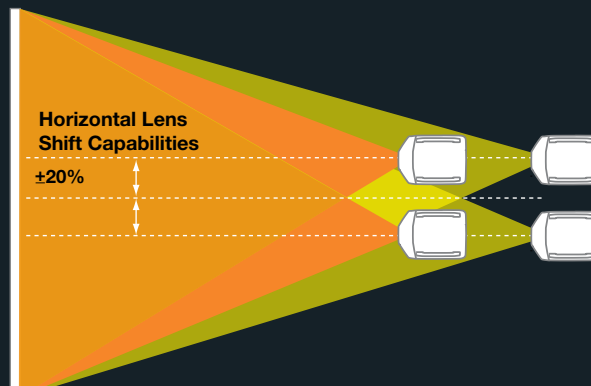
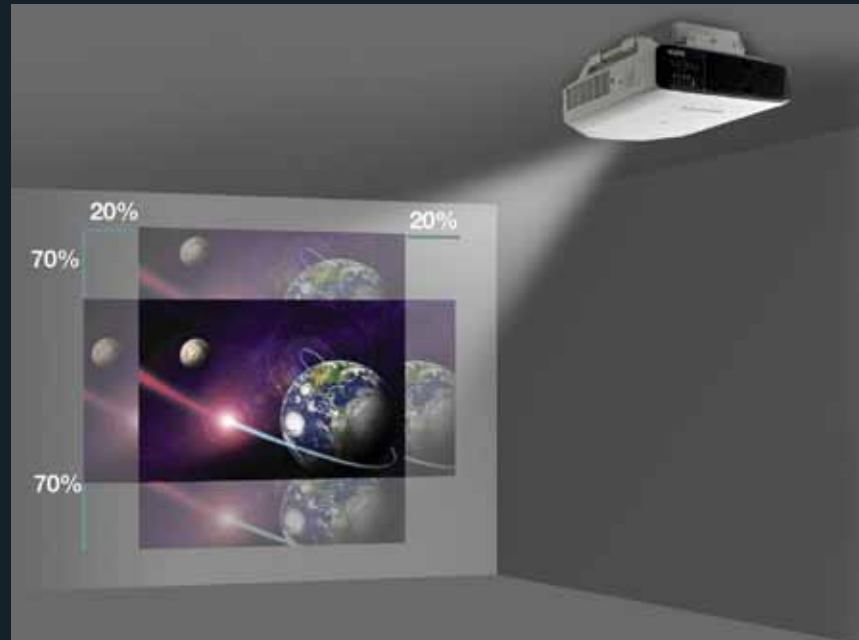






## Horizontal and Vertical Lens Shift

In addition to added reliability and amazing color performance, Epson's industry-leading 3LCD technology enables the projector to achieve a wide range of lens shift capabilities. This lens shift technology enables outstanding installation flexibility with an incredible range of + or – 70% on the vertical axis and + or – 20% on the horizontal axis. Users can operate the vertical lens shift function using the remote control, the projector control panel, or control commands.

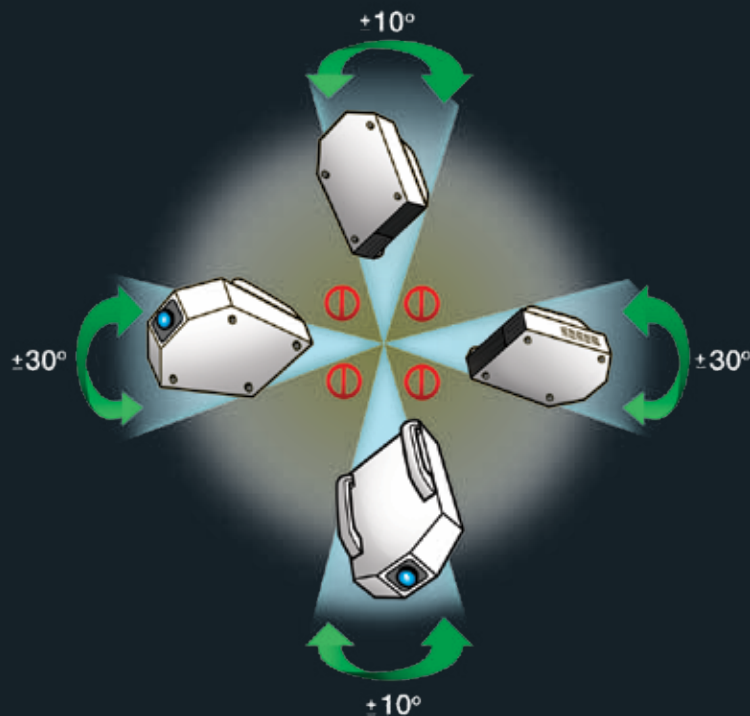


## Advanced Installation Features

- **Innovative cooling and filter system for venues with more demanding requirements** — perfect for restaurants, gaming venues and sports venues that require dust protection and have a higher performance/usage requirement
- **Off-axis installation for flexible placement** — install the projector so that it's facing up or down, for off-axis signage positioning

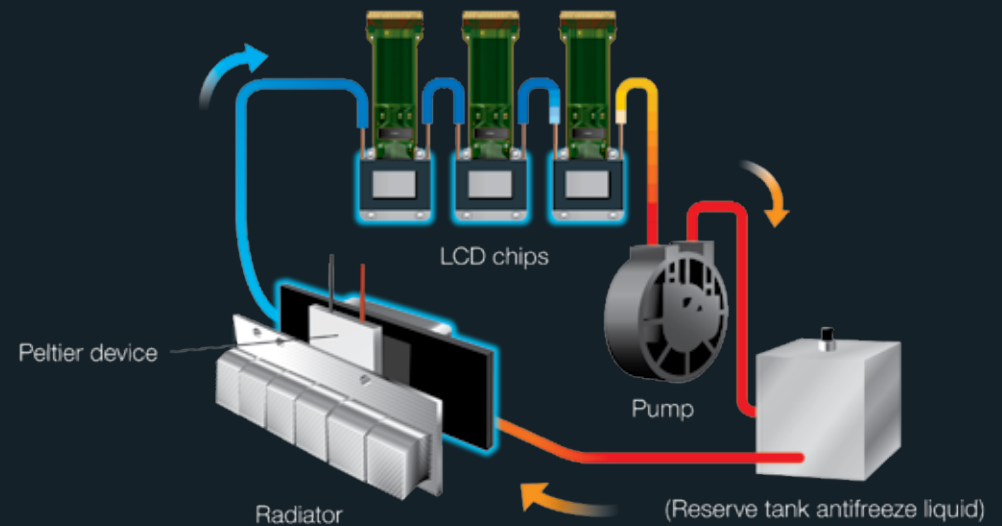
### Off-axis, Flexible Installation

The PowerLite Pro Z Series projectors can be rotated 90-degrees upward or downward with an additional 30-degree tilt operation for off-axis positioning flexibility. As a result, they can be used for a wide range of applications, such as projecting on the ceiling or floor, or as part of a rear-projection system. Epson technology keeps the projector running without compromising performance or causing overheating.



### Quiet, Reliable Liquid Cooling System

Epson's innovative system uses liquid to cool the LCD chips directly. The liquid absorbs the heat and is then cooled by a peltier device, which is then cooled by a fan, thereby keeping the overall optical engine cool. This system design promotes greater reliability and enables stable operation in temperatures up to 113 °F (45 °C). In addition, it offers quiet, unobtrusive operation and allows for off-axis installation orientations.





Flexible Enough for Off-axis Signage Requirements







**Epson understands that a presenter's priority is the audience. A projector should be easy to use, install, configure and maintain. The Epson PowerLite Pro Z Series projectors were designed with that in mind.**

#### **Direct Power On/Off**

Control the power to your projector with just the switch on a wall.

#### **Quick Corner®**

Easily manipulate projected images with corner-to-corner control.

#### **Off-axis Installations**

Use this for easy, off-axis installations.

#### **Keystone Correction**

Achieve a perfect square image, instantly and easily, by adjusting distortions up to +/-30 degrees vertically and +/-20 degrees horizontally.



## Low Cost of Ownership

- Easy maintenance
- One-touch filter replacement
- One-touch lamp replacement
- Monitor control
- Content over IP (Z8050WNL only)

## Easy Maintenance

The lamp and filter are accessible from the rear, without removing the main body from the mount.

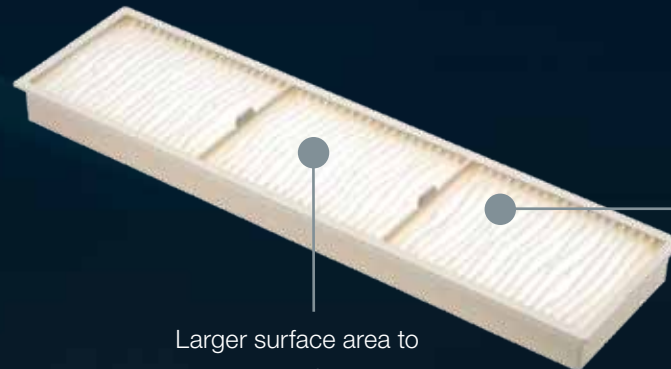
## Long-life, Easy-to-replace Lamps

Long-life lamps of 2,500 hours (Normal Mode) or 3,500 hours (ECO Mode)<sup>3</sup> can be replaced quickly with no tools and without having to uninstall the projector from the ceiling.



## Protect Your Investment — Long-life Electrostatic Air Filter

The PowerLite Pro Z8000WUNL and Z8050WNL filters are designed to protect the optical engine, lamp and electronics from small dust particles that can enter any projector. They have a recommended 10,000-hour filter cleaning schedule.<sup>2</sup> The Epson electrostatic filter captures particles as small as three microns, due in part to its pleated, expanded design. With one air intake and one exhaust path, these products offer an efficient airflow system for optimum cooling of key components and a reduction in dust-related problems. Additionally, they have the capability to send an e-mail notification through the EasyMP™ Monitor utility when an increase in temperature is detected, indicating the filter should be checked.



Larger surface area to protect your investment

The electrostatic filter is highly efficient at minimizing dust and also very durable. It captures dust particles down to the three-micron level.



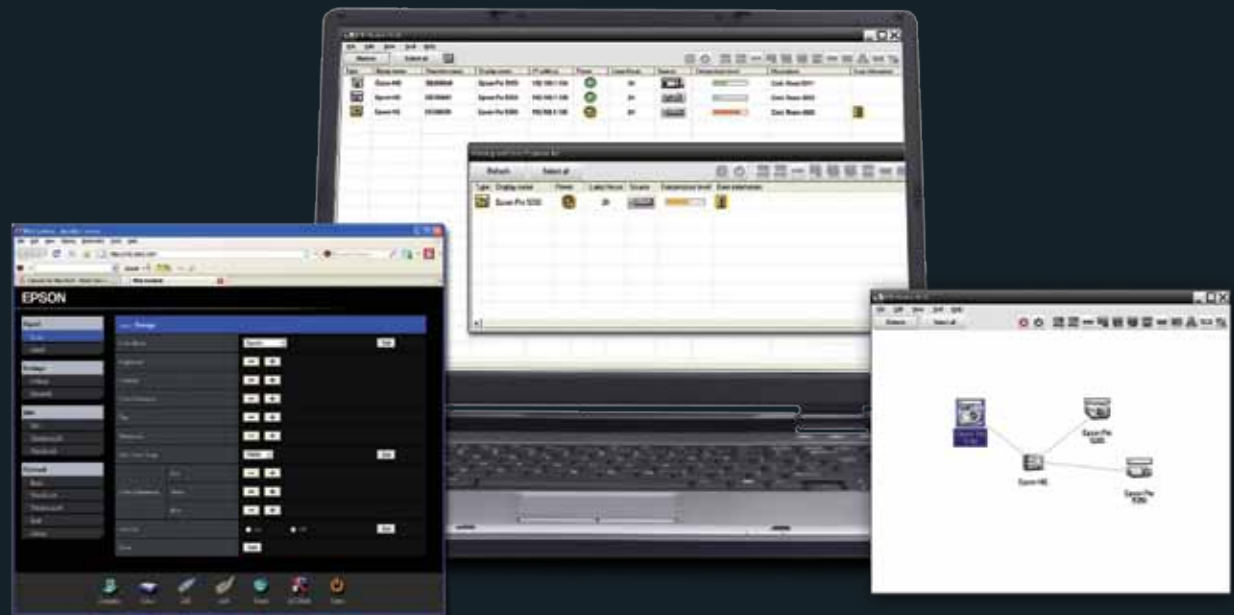
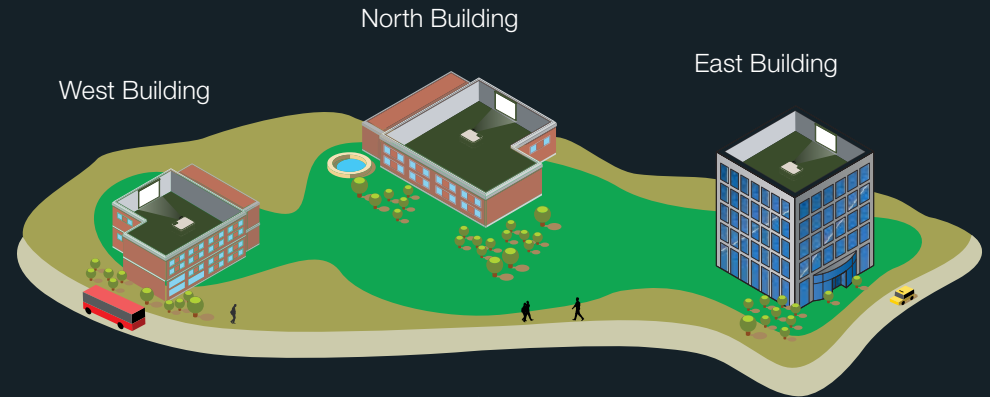
Enhance productivity with network monitoring and control. IT staff can receive e-mail notifications to alert them of projector status.

## EasyMP™ Monitor

**Monitor and control the status of all Epson networked projectors from a single computer.**

The included EasyMP Monitor software enables you to configure and operate projectors remotely over your network.

You can even send automatic e-mail alerts on projector status, including lamp, temperature, and filter notifications.



## Projector Control

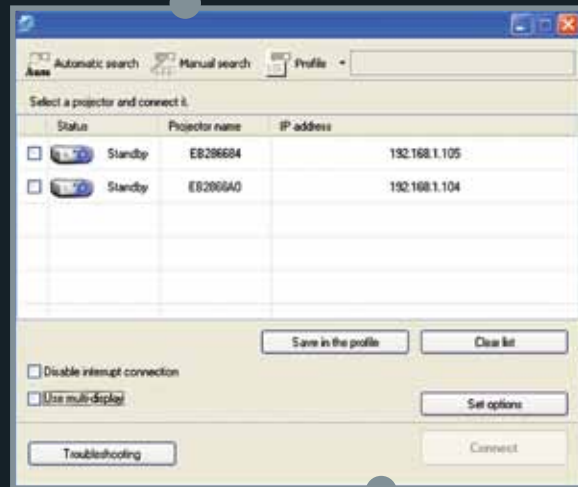
This utility allows users to control one projector at a time through the LAN network. Projector Control is used in the room in which the projector is located, taking the place of the remote control for some basic commands, including power on and off, volume control, source changes and others.



## EasyMP® Network Projection (Z8050WNL only)

EasyMP Network Projection is a client-based content-over-IP utility which is installed on a wireless or wired laptop (Mac® or PC). It allows users to send display content to any networked Epson EasyMP projectors from any IP network, using the EasyMP feature. This can be achieved through an existing network infrastructure.

EasyMP Network Projection



Use EasyMP Network Projection to send display content to any Epson projector that features EasyMP.

## Message Broadcasting ( Z8050WNL only)

Customize images/alerts over the network for announcements or instructions.



## Protocols

### ESCVP21.net

ESCVP21.net is a set of published and programmable IP codes that allow users to control and monitor networked Epson projectors via the LAN.

### ESCVP21

ESCVP21 is a set of published and programmable serial codes that allow users to control and monitor Epson projectors via a USB or RS-232 connection utilizing this ASCII-based protocol.





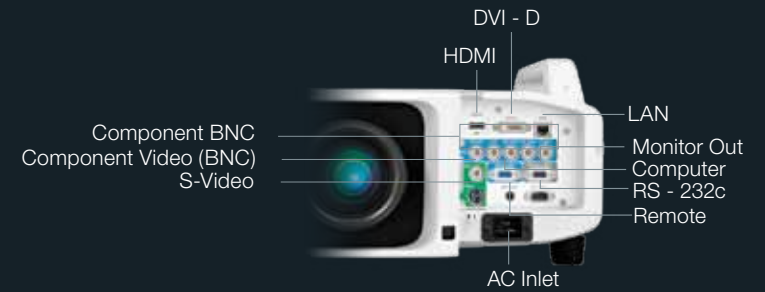
**Z8000WUNL/Z8050WNL Top**



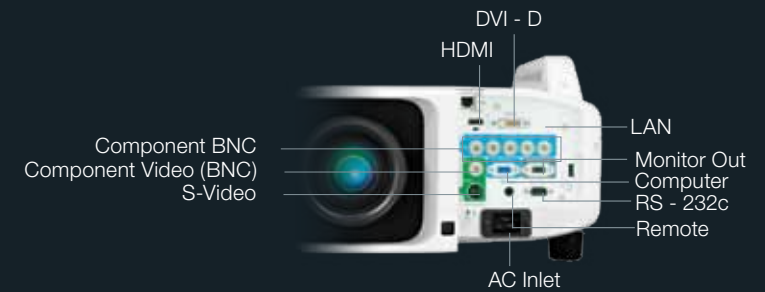
**Z8050WNL Front**



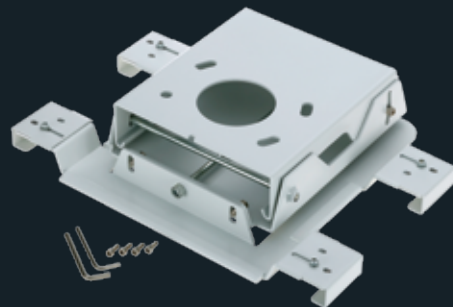
**Z8000WUNL Front**



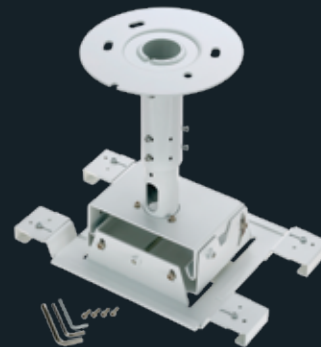
**Z8000WUNL Inputs**



**Z8050WNL Inputs**



**Flush Mount**



**Extended Pipe Mount**



**Z8000WUNL Back**



**Remote Control**

# Z8000WUNL

## Specifications

- Projection System**  
High-aperture Epson 3-chip, 3LCD technology
- Projection Method**  
Front/rear/ceiling mount
- LCD Driving Method**  
Epson Poly-silicon TFT Active Matrix
- Pixel Number**  
2,304,000 pixels x 3LCDs
- Native Resolution**  
WUXGA (1920 x 1200)
- Aspect Ratio**  
Native 16:10, also supports 4:3, 16:9, 5:4
- Pixel Arrangement**  
Cross stripe

## Projection Lens

- Type**  
Powered zoom/focus
- F-number**  
1.65 – 2.51 (Standard lens), lens not included
- Focal Length**  
36 mm – 57.35 mm (Standard lens)
- Zoom Ratio**  
Optical zoom 1.0 – 1.61 (Standard lens)
- Screen Throw Ratio Range**  
1.74" – 2.82" (Standard lens)
- Size (projected distance)**  
60" – 500"
- Lens Shift (powered)**  
Vertical: ±70%  
Horizontal: ±20%
- Keystone Correction**  
Vertical: -30 degrees to +30 degrees  
Horizontal: -20 degrees to +20 degrees
- Brightness (Normal Mode)<sup>1</sup>**  
White light output — 6000 lumens  
(ISO 21118 standard),  
Color light output — 6000 lumens
- Contrast Ratio**  
Up to 5000:1
- Brightness Uniformity (typical)**  
90%
- Color Reproduction**  
16.7 million colors

## Dual Lamps

- Type**  
330 W x 2 UHE
- Lamp Life<sup>2</sup>**  
Up to 2500 hours (Normal Mode)  
Up to 3500 hours (ECO Mode)

## Dimensions (W x D x H)

- Including Feet (with standard lens)  
21.0" x 28.9" x 8.9"
- Excluding Feet, Lens  
21.0" x 28.9" x 6.6"
- Weight**  
48.4 lb with standard lens
- Effective Scanning Frequency Range**  
Pixel Clock  
13.5 MHz to 162 MHz (up to UXGA 60 Hz)
- Horizontal**  
15 kHz to 80 kHz
- Vertical**  
24 Hz, 30 Hz, 50 Hz, 60 Hz (Digital)  
50 Hz to 85 Hz (Analog)

## Remote Control

- Features**  
Brightness, Contrast, Tint, Saturation, Sharpness, Color  
Mode, Input, Signal, Sync, Tracking, Position, Zoom, Focus,  
Lens Shift, Shutter, ID, Source Search
- Operating Angle**  
Front  
Right/left ± 60 degrees  
Upper/lower -45 to +15 degrees  
Rear  
Right/left ± 30 degrees  
Upper/lower -45 to +15 degrees
- Operating Distance**  
49.2'

## Display Performance

- Native**  
1920 X 1200
- Resize**  
640 x 480  
800 x 600  
1280 x 1024  
1400 x 1050  
1600 x 1200

- Video I/O**  
Display Performance  
NTSC: 560 lines  
PAL: 560 lines  
(depends on observation of the multi-burst pattern)

- Input Signal**  
NTSC / NTSC4.43 / PAL / M-PAL / N-PAL /  
PAL60 / SECAM  
SDTV: 480i / 576i / 480p / 576p / 720p /  
1080i / 1080p  
3D Y/C separation, noise reduction motion  
compensated  
Interlace progressive conversion  
(2 – 2, 3 – 2 film detection)

## Interfaces

- Computer/component video: D-sub HD 15 pin x 1
- 5BNC component x1
- HDMI x 1
- DVI-D x 1
- Hardwire remote jack x 1
- S-video: mini DIN x 1
- Composite video BNC x 1,
- LAN networking: RJ-45 x 1, 10/100Mb
- Serial: RS-232c x 1
- Monitor out: mini D-sub 15 pin x 1

## Other Features

- Audio Output**  
None
- Operating Temperature**  
32 ° to 113 °F (0 ° to 45 °C)
- Power Supply Voltage**  
100 – 240 V ±10%, 50/60 Hz AC
- Power Consumption**  
942 W (Normal operation)  
776 W (ECO operation)  
0.3 W standby (network off)
- Fan Noise**  
38 dB (Normal Mode)  
32 dB (ECO Mode)
- Security**  
Kensington®- style lock provision, anchor  
(metal) bar for security lock or cable, handles  
attached to body for cable wrap

## Support — The Epson Connection<sup>SM</sup>

- Pre-sales support  
U.S. and Canada  
Internet website  
800-463-7766  
www.epson.com
- Projector Service and Warranty Programs**  
Three-year projector limited warranty, 90-day limited lamp  
warranty, Epson Road Service Program and  
Epson PrivateLine® dedicated toll-free support  
(U.S. and Canada only)
- Contents in Box**  
Power cable, computer cable, projector  
remote control, batteries, cable cover, user manual CD,  
Quick Setup Sheet, PrivateLine support card, password  
protection sticker, monitor and control CD

## Accessory Part Numbers

- Lens Part Numbers**  
Standard zoom lens (ELPLS04) V12H004S04  
Long throw zoom lens (ELPLL07) V12H004L07  
Middle-throw zoom lens 1 (ELPLM06) V12H004M06  
Middle-throw zoom lens 2 (ELPLM07) V12H004M07  
Rear projection wide lens (ELPLR04) V12H004R04  
Wide zoom lens (ELPLW04) V12H004W04
- Mount Part Numbers**  
Flush ceiling mount bracket V12H003B25  
Mount bracket with extended pipe V12H003B26
- Other Accessories Part Numbers**  
Kensington security lock ELPSL01  
Hardware remote control cable set V12H005C28  
Replacement remote control 1512200
- Genuine Epson Lamp Part Numbers**  
Single (ELPLP51) V13H010L51  
Dual lamp kit (lamp x 2) (ELPLP52) V13H010L52
- Projector Part Number**  
PowerLite Pro Z8000WUNL V11H266920  
(lens not included)
- Replacement Air Filter Set Part Number**  
Replacement air filter set V13H134A23

# Z8050WNL

## Specifications

### Projection System

High-aperture Epson 3-chip, 3LCD technology

### Projection Method

Front/rear/ceiling mount

### LCD Driving Method

Epson Poly-silicon TFT Active Matrix

### Pixel Number

1,024,000 pixels x 3LCDs

### Native Resolution

WXGA (1280 x 800)

### Aspect Ratio

Native 16:10, also supports 4:3, 16:9, 5:4

### Pixel Arrangement

Cross stripe

## Projection Lens

### Type

Powered zoom/focus

### F-number

1.65 – 2.51 (Standard lens), lens not included

### Focal Length

36 mm – 57.35 mm (Standard lens)

### Zoom Ratio

Optical zoom 1.0 – 1.61 (Standard lens)

### Screen Throw Ratio Range

1.74" – 2.82" (Standard lens)

### Size (projected distance)

60" – 500"

### Lens Shift (powered)

Vertical: ±70%

Horizontal: ±20%

### Keystone Correction

Vertical: -30 degrees to +30 degrees

Horizontal: -20 degrees to +20 degrees

### Brightness (Normal Mode)<sup>1</sup>

White light output — 7000 lumens

(ISO 21118 standard)

Color light output — 7000 lumens

### Contrast Ratio

Up to 5000:1

### Brightness Uniformity (typical)

90%

### Color Reproduction

16.7 million colors

## Dual Lamps

### Type

330 W x 2 UHE

### Lamp Life<sup>2</sup>

Up to 2500 hours (Normal Mode)

Up to 3500 hours (ECO Mode)

## Dimensions (W x D x H)

Including Feet (with standard lens)

21.0" x 28.9" x 8.9"

Excluding Feet, Lens

21.0" x 28.9" x 6.6"

### Weight

48.4 lb with standard lens

### Effective Scanning Frequency Range

Pixel Clock

13.5 MHz to 162 MHz (up to UXGA 60 Hz)

### Horizontal

15 kHz to 80 kHz

### Vertical

24 Hz, 30 Hz, 50 Hz, 60 Hz (Digital)

50 Hz to 85 Hz (Analog)

## Remote Control

### Features

Brightness, Contrast, Tint, Saturation, Sharpness,  
Color Mode, Input signal, Sync, Tracking, Position, Zoom,  
Focus, Lens Shift, Shutter, ID, Source Search

### Operating Angle

Front

Right/left ± 60 degrees

Upper/lower -45 to +15 degrees

Rear

Right/left ± 30 degrees

Upper/lower -45 to +15 degrees

### Operating Distance

49.2'

## Display Performance

### Native

1280 X 800

### Resize

640 x 480

800 x 600

1280 x 1024

1400 x 1050

1600 x 1200

### Video I/O

Display Performance

NTSC: 560 lines

PAL: 560 lines

(depends on observation of the multi-burst  
pattern)

### Input Signal

NTSC / NTSC4.43 / PAL / M-PAL / N-PAL /

PAL60 / SECAM

SDTV: 480i / 576i / 480p / 576p / 720p /

1080i / 1080p

3D Y/C separation, noise reduction motion  
compensated

Interlace progressive conversion

(2 – 2, 3 – 2 film detection)

## Interfaces

Computer/component video: D-sub HD 15 pin x 1

5BNC component x1

HDMI x 1

DVI-D x 1

Hardwire remote jack x 1

S-video: mini DIN x 1

Composite video BNC x 1,

LAN networking: RJ-45 x 1, 10/100Mb

Serial: RS-232c x 1

Monitor out: mini D-sub 15 pin x 1

## Other Features

### Audio Output

None

### Operating Temperature

32 ° to 113 °F (0 ° to 45 °C)

### Power Supply Voltage

100 – 240 V ±10%, 50/60 Hz AC

### Power Consumption

942 W (Normal operation)

776 W (ECO operation)

0.3 W standby (network off)

### Fan Noise

38 dB (Normal Mode)

32 dB (ECO Mode)

### Security

Kensington - style lock provision, anchor  
(metal) bar for security lock or cable, handles  
v to body for cable wrap

## Support — The Epson Connection

Pre-sales support

U.S. and Canada 800-463-7766

Internet website [www.epson.com](http://www.epson.com)

### Projector Service and Warranty Programs

Three-year projector limited warranty, 90-day limited lamp  
warranty, Epson Road Service Program and  
Epson PrivateLine dedicated toll-free support  
(U.S. and Canada only)

### Contents in Box

Power cable, computer cable, projector  
remote control, batteries, cable cover, user manual CD,  
Quick Setup Sheet, PrivateLine support card, password  
protection sticker, monitor and control CD

## Accessory Part Numbers

### Lens Part Numbers

Standard zoom lens (ELPLS04)	V12H004S04
Long-throw zoom lens (ELPLL07)	V12H004L07
Middle-throw zoom lens 1 (ELPLM06)	V12H004M06
Middle-throw zoom lens 2 (ELPLM07)	V12H004M07
Rear projection wide lens (ELPLR04)	V12H004R04
Wide zoom lens (ELPLW04)	V12H004W04

### Mount Part Numbers

Flush ceiling mount bracket	V12H003B25
Mount bracket with extended pipe	V12H003B26

### Other Accessories Part Numbers

Kensington security lock	ELPSL01
Hardware remote control cable set	V12H005C28
Replacement remote control	1512200

### Genuine Epson Lamp Part Numbers

Single (ELPLP51)	V13H010L51
Dual lamp kit (lamp x 2) (ELPLP52)	V13H010L52

### Projector Part Number

PowerLite Pro Z8050WNL (lens not included)	V11H265920
---	------------

### Replacement Air Filter Set Part Number

Replacement air filter set	V13H134A23
----------------------------	------------

## Z8000WUNL Signal Charts

### Compatible Video Formats

Mode	Refresh Rate (Hz)	Resolution
VGA—60	60	640 × 480
VESA—72*	72	640 × 480
VESA—75*	75	640 × 480
VESA—85*	85	640 × 480
SVGA—56*	56	800 × 600
SVGA—60	60	800 × 600
SVGA—72*	72	800 × 600
SVGA—75*	75	800 × 600
SVGA—85*	85	800 × 600
XGA—60*	60	1024 × 768
XGA—70*	70	1024 × 768
XGA—75*	75	1024 × 768
XGA—85*	85	1024 × 768
SXGA1—70*	70	1152 × 864
SXGA1—75*	75	1152 × 864
SXGA1—85*	85	1152 × 864
WXGA—60	60	1280 × 800
WXGA—75*	75	1280 × 800
WXGA—85*	85	1280 × 800
SXGA2—60	60	1280 × 960
SXGA2—75*	75	1280 × 960
SXGA2—85*	85	1280 × 960
SXGA3—60	60	1280 × 1024
SXGA3—75*	75	1280 × 1024
SXGA3—85*	85	1280 × 1024
WXGA1—60*	60	1280 × 768
WXGA2—60*	60	1280 × 768
WXGA+60**	60	1440 × 900
WXGA+75**	75	1440 × 900
WXGA+85**	85	1440 × 900
SXGA+60	60	1400 × 1050
SXGA+75*	75	1400 × 1050
SXGA+85*	85	1400 × 1050
UXGA—60	60	1600 × 1200

## Z8050WNL Signal Charts

### Compatible Video Formats

Mode	Refresh Rate (Hz)	Resolution
VGA—60	60	640 × 480
VESA—72*	72	640 × 480
VESA—75*	75	640 × 480
VESA—85*	85	640 × 480
SVGA—56*	56	800 × 600
SVGA—60	60	800 × 600
SVGA—72*	72	800 × 600
SVGA—75*	75	800 × 600
SVGA—85*	85	800 × 600
XGA—60*	60	1024 × 768
XGA—70*	70	1024 × 768
XGA—75*	75	1024 × 768
XGA—85*	85	1024 × 768
SXGA1—70*	70	1152 × 864
SXGA1—75*	75	1152 × 864
SXGA1—85*	85	1152 × 864
WXGA—60	60	1280 × 800
WXGA—75*	75	1280 × 800
WXGA—85*	85	1280 × 800
SXGA2—60	60	1280 × 960
SXGA2—75*	75	1280 × 960
SXGA2—85*	85	1280 × 960
SXGA3—60	60	1280 × 1024
SXGA3—75*	75	1280 × 1024
SXGA3—85*	85	1280 × 1024
WXGA1—60*	75/85	1280 × 768
WXGA2—60*	60	1360 × 768
WXGA+60**	60	1440 × 900
WXGA+75**	75	1440 × 900
WXGA+85**	85	1440 × 900
SXGA+60	60	1400 × 1050
SXGA+75*	75	1400 × 1050
SXGA+85*	85	1400 × 1050
UXGA—60	60	1600 × 1200
WSXGA+60*,***	60	1680 × 1050

Mode	Refresh Rate (Hz)	Resolution
iMAC VGA*	117	640 × 480
iMAC SVGA*	95	800 × 600
iMAC XGA*	75	1024 × 768
MAC13*	67	640 × 480
MAC16*	75	832 × 624
MAC19*	75	1024 × 768
MAC19-60*	59	1024 × 768
MAC21*	75	1152 × 870
NTSC	60	—
NTSC 4:43	60	—
PAL	50	—
N-PAL	50	—
M-PAL	60	—
PAL—60	60	—
SECAM	50	—
TV525i (480i)	60	—
TV625i (576i)	50	—
SDTV525p (480p)	60	—
SDTV625p (576p)	50	—
HDTV750p (720p)	60	—
HDTV750p (720p)	50	—
HDTV1125i (1080i)	60	—
HDTV1125i (1080i)	50	—
HDTV1125p (1080p)	60	—
HDTV1125p (1080p)	50	—
HDTV1125p (1080p)**	24	—
HDTV1125p (1080p)**	30	—

<sup>1</sup> Light output varies depending on mode (color and white light output). White light output measured using ISO 21118 standard.

<sup>2</sup> Recommendation based on normal room conditions. Cleaning requirements may vary depending on use, environment and other conditions.

<sup>3</sup> Lamp life will vary depending upon mode selected, environmental conditions and usage. Lamp brightness decreases over time.

\* Analog only

\*\* HDMI only

\*\*\* Available only when Wide is selected as the Resolution.